

# Instruction Manual

E-CORE FIRE BOLT - MODEL: ECF1985CT - AS 1530.4.2014

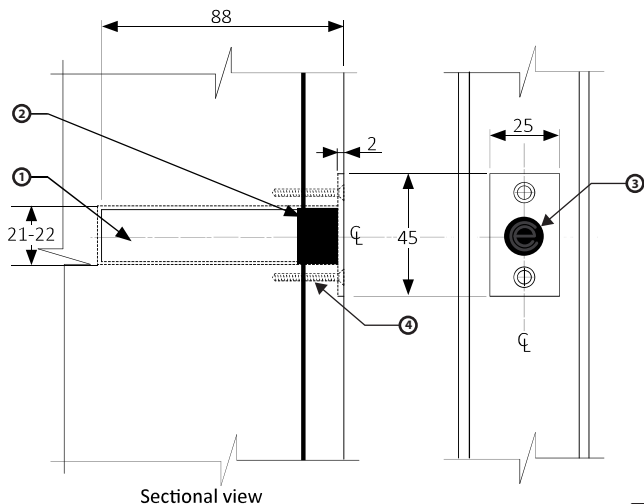
## Components in box:

ID Description of components

- ① E-Core fire bolt body
- ② E-Core intumescent strip
- ③ Finishing Plug
- ④ Bag of screws



## Overview:

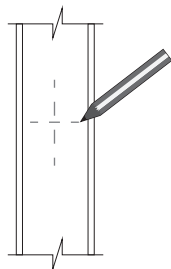


## Installation instructions: Marking and preparation of bolt.

### Step 01

Mark the installation location centrally in door leaf edge.

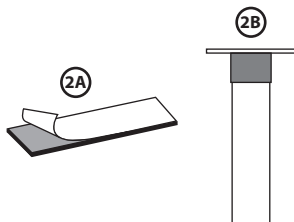
Centre with pilot hole that is pre-drilled into door frame.



### Step 02

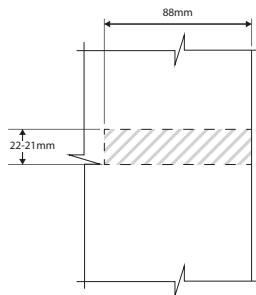
**(2A)** Remove backing paper from intumescent strip.

**(2B)** Wrap the intumescent strip around the tube of the fire bolt body.



### Step 03

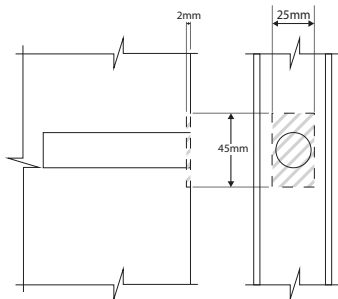
Drill a 21-22mm diameter hole 88mm deep centrally into the door leaf edge, through the steel perforated plate or meeting stile material and into the core.



## Installation instructions: Drilling and inserting bolt.

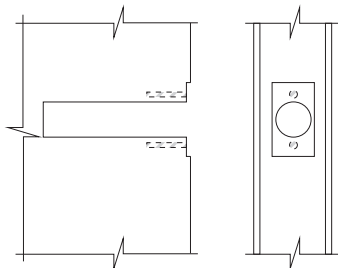
### Step 04

Mark and cut out the rebate for the fire bolt front plate (45 x 25 x 2mm deep), cut into the timber edge of the door leaf or the aluminium meeting stile for pairs.



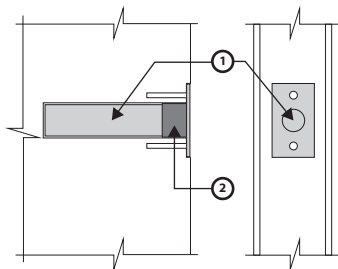
### Step 05

Pre-drill holes for screws through timber framing into steel perforated plate, or into meeting stile material.



### Step 06

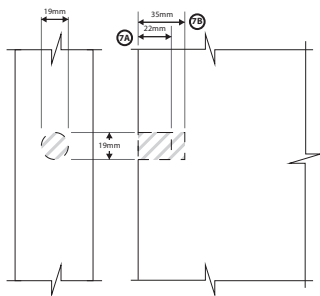
Insert E-Core fire bolt ① with intumescent strip ② attached into the hole drilled in the door leaf and secure in place with screws provided.



## Installation instructions: Corresponding receiving hole.

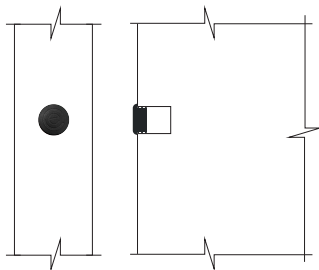
### Step 07

- 7A** When installing into the perimeter door edge, drill a 19mm corresponding receiving hole into the door frame rebate. Receiving hole depth shall be a minimum depth of 22mm.
- 7B** Or into aluminium meeting stile, drill a 19mm into the door edge a minimum depth of 35mm.



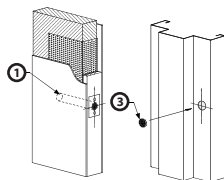
### Step 08

Install (push-fit) PVC finishing plug in 19mm diameter Receiving hole.

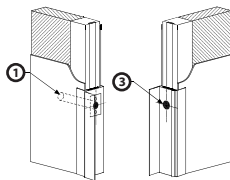


## Additional installation details

**A** E-Core fire bolt shown installed into fire door edge.



**B** E-Core fire bolt shown installed into Aluminium meeting stiles.



**C** E-Core fire bolt shown installed into aluminium meeting stiles for double door-sets 2401 to 2700mm high.

