

Inspired  
solutions.



# Acoustic timber ceiling tile



# Architectural specifications

## Kwiktile acoustic timber ceiling tiles

The Kwiktile range brings a fresh level of design, incorporating natural timber-look panels in elegant patterns with high-level acoustic properties.

### Features

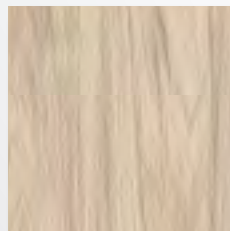
From the lighter oak ranges to the Grey Walnut and darker Charcoal Oak, the Kwiktile system comes in a variety of colour and pattern options to suit the design aesthetic of any space.

The panels come in two acoustic ratings – the standard model and KwiktileX, with the latter providing a premium noise reduction coefficient (NRC) rating.

### Timber selection



White Oak



Hickory



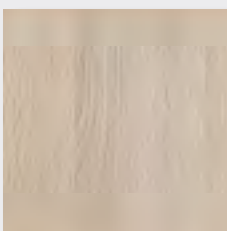
Golden Elm



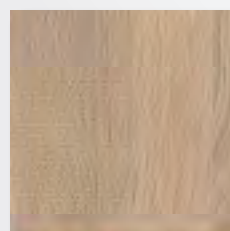
Taupe Oak



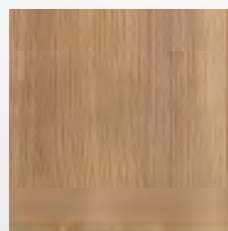
Grey Walnut



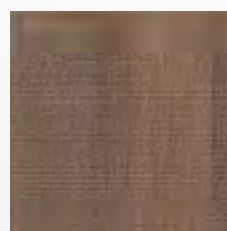
Caledonian Oak



Cambrian Oak



Biscotti Oak



Britannia Oak



Charcoal Oak

Achieve high-level design aesthetics through Kwiktile's unique advantage of matching MDF core colours.

The Galaxy pattern provides the designer with the unique ability to create a night-sky effect. Simply select one of the darker timber options with a black Kwikloc ceiling grid and pair with a tile light backing to produce an ultimate luminous effect.

### General

The Kwiktile panels lay into a Kwikloc aluminium ceiling grid, as manufactured in Australia by Studform.

### Material

The 1200mm x 600mm Kwiktile panels feature a natural veneer 12mm MDF

face in 10 colours, with eight design patterns to choose from.

The panels pair with Studform's Kwikloc ceiling system, with seismic options if required.

Select a tile colour and tile pattern from either the Kwiktile or KwiktileX range, plus a Kwikloc grid system in either white, black, natural anodised or Corten for the complete ceiling package.

### Installation

The Kwiktile panels seamlessly integrate with the Kwikloc ceiling system for easy installation. For more information on Kwikloc ceiling system installation, contact Studform on 1800 352 366 or go to [studform.com.au/kwikloc](http://studform.com.au/kwikloc).

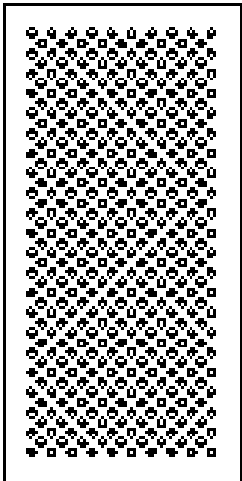
## NRC Rating Information

Each tile pattern has been specially designed to offer the highest possible NRC rating. Choose from the Kwiktile or KwiktileX range to suit your acoustic needs.

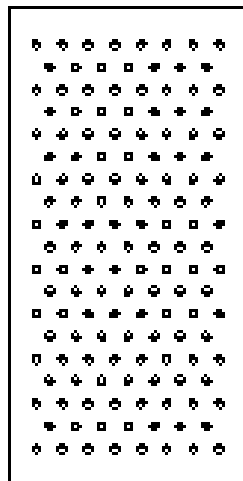
	Kwiktile NRC	KwiktileX NRC
Atom 1	0.75	0.90
Atom 2	0.55	0.60
Dalmatian	0.60	0.70
Galaxy	0.60	0.65
Linear 1	0.75	0.90
Linear 2	0.80	0.95
Linear Mix	0.65	0.70
Pyramid	0.75	0.90

# Endless elegant styles

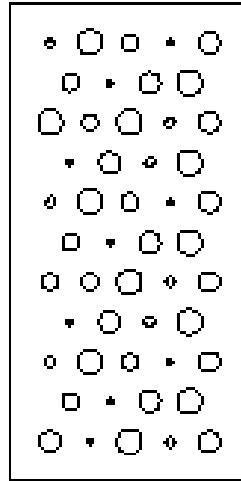
## Tile patterns



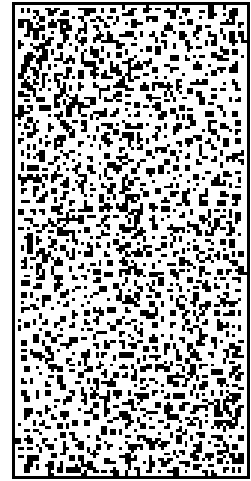
Atom 1  
Open Area: 18%



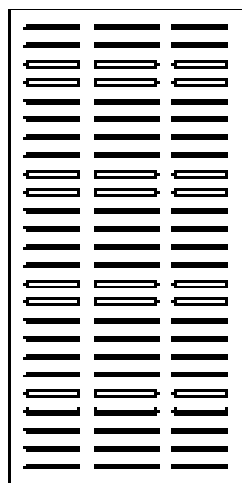
Atom 2  
Open Area: 6%



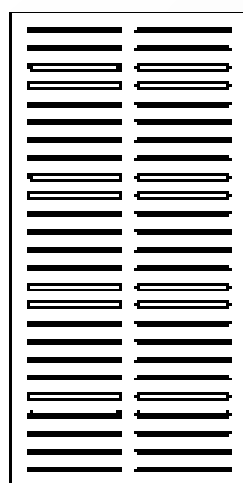
Dalmatian  
Open Area: 10%



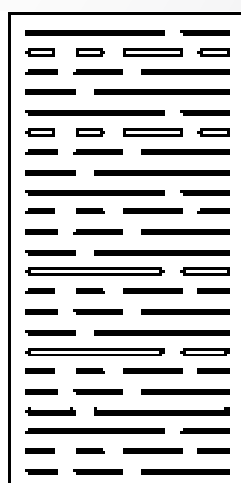
Galaxy  
Open Area: 6%



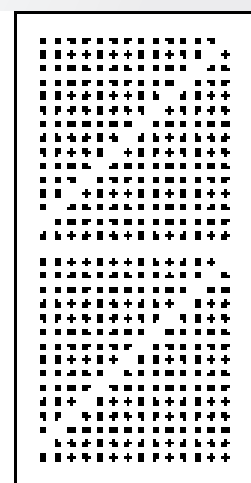
Linear 1  
Open Area: 23%



Linear 2  
Open Area: 26%



Linear Mix  
Open Area: 12%



Pyramid  
Open Area: 5%

\*Available in 600mm x 600mm tiles upon request.

# Studform brochures also available:

- Kwikloc Seismic ceiling systems
- Kwikloc Aquatic ceiling systems
- Kwikloc Health ceiling systems
- Kwiklux LED Grid Lighting systems
- Kwiktile Acoustic Timber ceiling tiles
- Premium ceiling tiles
- Korporate aluminium partition suite
- Satellite commercial doors
- Satellite residential doors
- Acoulite high performance acoustic doors



## Contact us:

Studform Pty Ltd

### South Australia:

4 Manton Street, Hindmarsh

Phone: 08 8448 2000

Email: [info@studform.com.au](mailto:info@studform.com.au)

[www.studform.com.au](http://www.studform.com.au)